



GAT MONTHLY MEMBERSHIP PROGRESS REPORT

Results as of: 4/30/2023

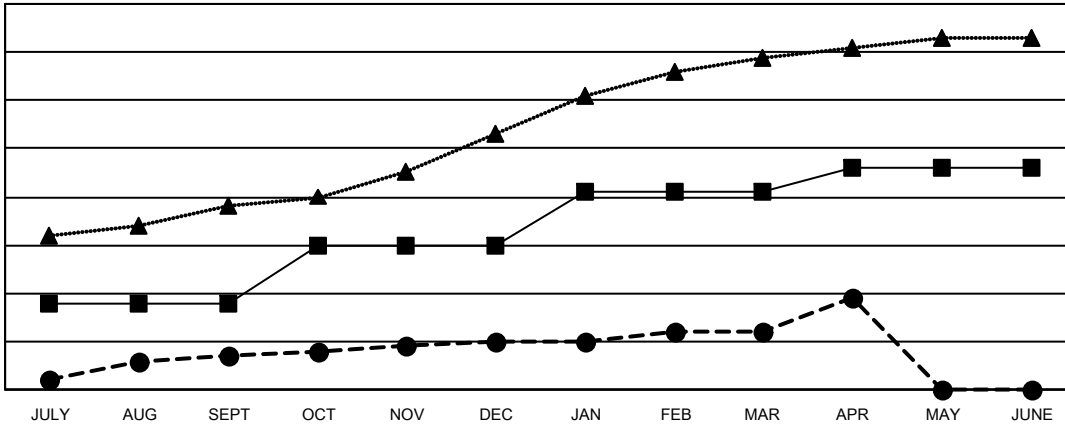
Multiple District 3232

LOCATION: INDIA

| Clubs | | | |
|-----------------------|---------------|-----------|---------------|
| RESULTS FOR 2022-2023 | | | |
| QUARTER | NEW CLUB GOAL | NEW CLUBS | DROPPED CLUBS |
| JULY/AUG/SEPT | 18 | 7 | 102 |
| OCT/NOV/DEC | 12 | 3 | 15 |
| JAN/FEB/MAR | 11 | 2 | 6 |
| APR/MAY/JUNE | 5 | 7 | 2 |

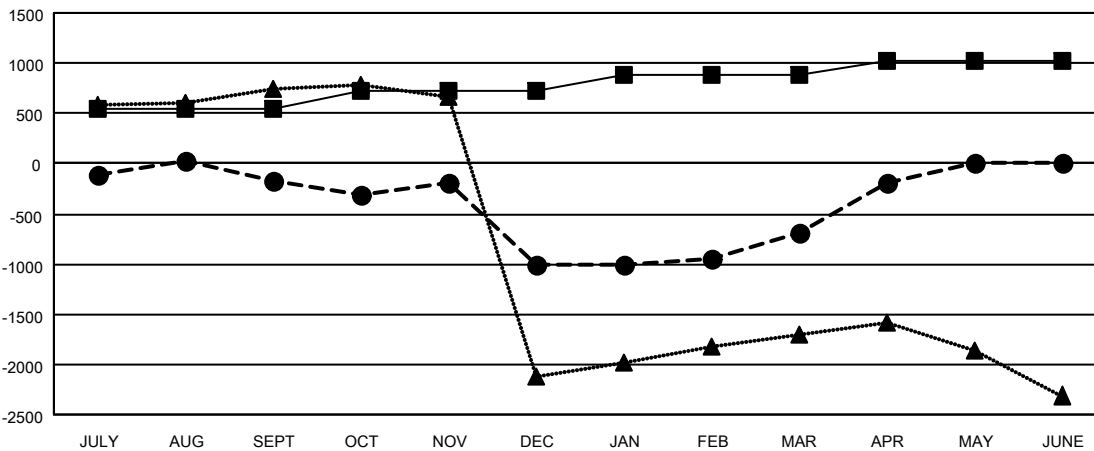
| Members | | | |
|-----------------------|------------------------|----------------------|--|
| RESULTS FOR 2022-2023 | | | |
| QUARTER | MEMBER GROWTH NET GOAL | MEMBER GROWTH ACTUAL | DROPPED MEMBERS ACTUAL (including transfers) |
| JULY/AUG/SEPT | 545 | 558 | 658 |
| OCT/NOV/DEC | 175 | 796 | 1,573 |
| JAN/FEB/MAR | 170 | 506 | 112 |
| APR/MAY/JUNE | 125 | 773 | 160 |

GOALS AND ACTUAL NEW CLUBS CUMULATIVE



- CURRENT YEAR GOALS FOR NEW CLUBS
- CURRENT YEAR ACTUAL NEW CLUBS
- ▲- LAST YEAR ACTUAL NEW CLUBS

GOALS AND ACTUAL MEMBERS CUMULATIVE



- MEMBER GROWTH NET GOAL
- MEMBER GROWTH ACTUAL
- ▲- LAST YEAR MEMBERSHIP ACTUAL

| | | |
|------------------------|---|--|
| DROPPED CLUBS: 125 | 306 CLUBS OF 619 ADDED 1 OR MORE NEW MEMBERS | GENDER DISTRIBUTION |
| DROPPED MEMBERS | CLICK HERE FOR CUMULATIVE MEMBERSHIP DATA | MALE 11,189 (63.02%) |
| DECEASED 30 | | FEMALE 6,561 (36.96%) |
| CLUB CANCELLED 331 | | NON BINARY 0 (0.00%) |
| OTHER 2,142 | | PREFER NOT TO ANSWER 4 (0.02%) |
| TOTAL 2,503 | | TOTAL FAMILY UNIT MEMBERS 13,054 |
| | | FAMILY MEMBERS PAYING HALF DUES 8,992 |